

C / 16200

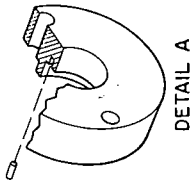
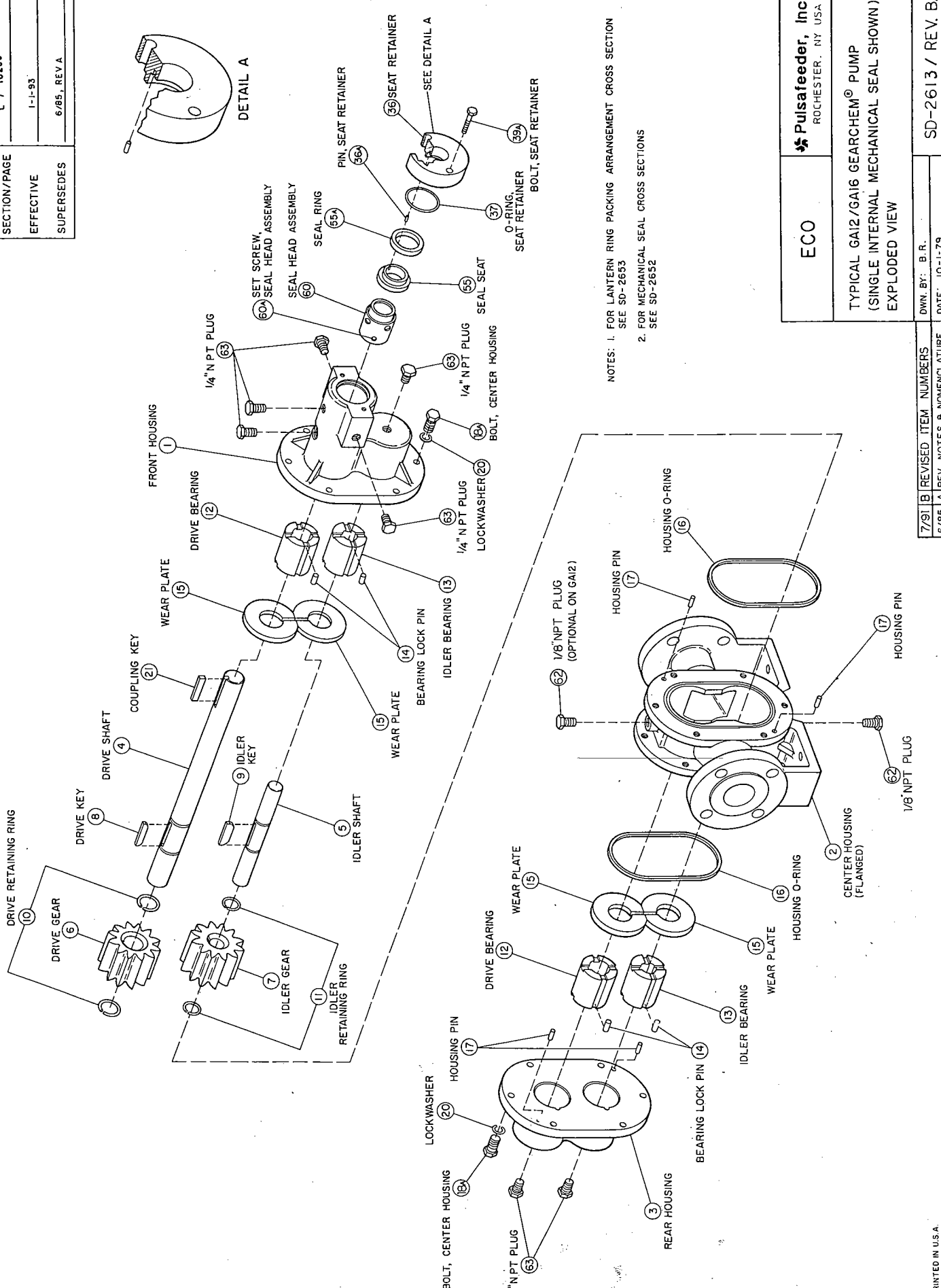
1-1-83

6/85, REV A

SECTION/PAGE

EFFECTIVE

SUPERSEDES



NOTES: 1. FOR LANTERN RING PACKING ARRANGEMENT CROSS SECTION SEE SD-2653
 2. FOR MECHANICAL SEAL CROSS SECTIONS SEE SD-2652

ECO	Pulsafeeder, Inc. ROCHESTER, NY USA	
	TYPICAL GA12/GA16 GEARCHEM® PUMP (SINGLE INTERNAL MECHANICAL SEAL SHOWN) EXPLODED VIEW	

7/91	B	REVISED ITEM NUMBERS
6/85	A	REV NOTES & NOMENCLATURE

DWN. BY: B.R.
 DATE: 10-1-79
 SD-2613 / REV. B.